

ICL Pathway

Ref: CR/FSP/003

DSS/POCL Functional Specification

Version: 6.0

Date: 26/7/96

1. ABOUT THIS DOCUMENT

1.1 PURPOSE

Schedule B7 (Authorities' Agreement), paragraph 2.2, required that Pathway would supply BA/POCL with a Functional Specification (FS) within one week of execution of the contract, 15 May 1996, for agreement by a target date of 30 June 1996. Version 3 was published on 22 May and extensively reviewed by all parties. Version 4 was published on 14 June and was further reviewed as planned. Version 5 was published 26 June and received final approvals on 30 June, thus fulfilling the terms of the contract.

The fundamental purpose of this process is to establish an early level of agreement between Pathway and the Authorities concerning a more detailed level of specification of functionality of the services to be supplied, and by association, the underlying products from which such services are derived, such that service and product development activities can be undertaken with expedition and a high degree of confidence.

Schedule B7 paragraph 2.2 provides that changes to the FS definition subsequent to agreement will be subject to a process of agreed change control. The purpose of such change control is to facilitate necessary and agreed change in a scrutinised and orderly manner, and is neither to prevent such change nor implicitly vary any party's obligations under the contracts.

1.2 STRUCTURE AND SCOPE

[R951, R927, R928, R932, R973]

This FS is organised in a manner which anticipates the Service Architecture Design Document (SADD), which is required according to Clause 401.1 in the Authorities' Agreement. This FS is developed under change control from its initial form such that it becomes the SADD itself when satisfactorily complete and detailed and that it is maintained thereafter as the SADD. In this manner there will be a complete description and unbroken audit trail of changes proposed and changes agreed. It is anticipated that the first version of the SADD to correspond with the start of Operational Trial will be achieved in September 1996 and will reach a "steady state" state in June 1997.

Figure 1-1 on the following page shows the structure required of the SADD according to the terms of the initial agreements.

DSS/POCL Functional Specification

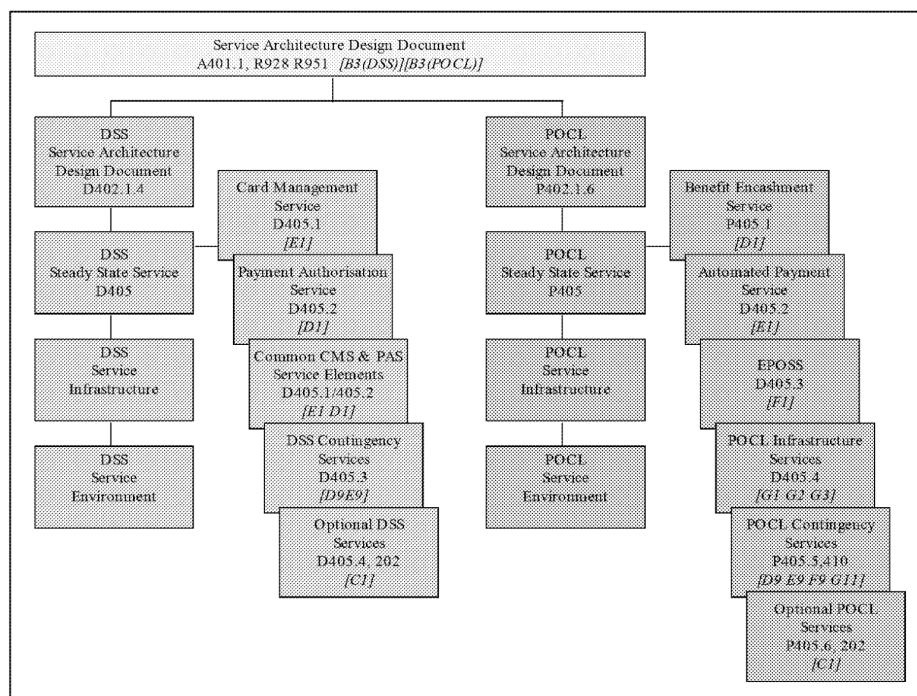


Figure 1-1: Required structure of the Service Architecture Design Document

The scope of the SADD, and hence the target scope of this document, is therefore the Steady State Service Definition of the Pathway Service as a whole, divided principally into the two Steady State Service Definitions applicable to the two Contracting Authorities but with certain topics which are logically for description at the Pathway Service level.

At early levels of revision of the FS only those parts necessary for the immediate purpose will be populated. Over time it is anticipated that material from the body of the document will be abstracted to appropriate appendices.

Sections 2.1 and 2.2 form a concise description of the Service Architecture.

Detailed procedures will be discussed and agreed between DSS, POCL and Pathway and will form part of the procedures documentation.

ICL Pathway

Ref: CR/FSP/003

DSS/POCL Functional Specification

Version: 6.0

Date: 26/7/96

1.2.1 CONTRACTUAL BASIS OF STRUCTURE

Where appropriate, the defining clause for an element is shown; for example, A401.1, D405.2 or P405.4, denoting respectively the Authorities', DSS or POCL Agreement clause in question. Similarly the schedules associated with each element are identified in brackets, in italics where they are to be produced. Requirements and, in due course, Solutions are denoted by Rnnn and Snnn respectively, for example, R951.

The Card Management and Payment Authorisation Services embrace a number of second order services, for example, the BPS Management Information Service. These are grouped as common service elements within the DSS Service Architecture.

1.2.2 PFI SERVICE LEVEL COMPONENTS

It is in the nature of the total service solution that the end-to-end aspects of the Benefit Payment Service (BPS) are specified at the top level of Service Architecture. The Card Management and Payment Authorisation Services (CMS, PAS), together with several supporting services, are defined within the DSS Service Architecture, while the Benefit Encashment Service (BES) forms part of the POCL Service Architecture.

In addition, certain aspects of the security architecture are for specification at the top level of the Pathway Service Architecture.

In order to assist understanding of the operation of the services, this document provides information about the products on which they are expected to be based. These underlying systems may be implemented differently from the manner described as a result of the parties meeting their obligations under the agreements.