



Initial Complaint Review and Mediation Scheme

ExCo Update

13 February 2014

Agenda



1. Background/Context
2. Programme Governance
3. Programme Plan
4. Performance Dashboard
5. Key Risks and Issues
6. Second Sight Engagement
7. Scope of the Working Group
8. Timeline of Key Events
9. Stakeholder Engagement

Decisions for this meeting

1. Background/Context

POST OFFICE

Background/
Context

Programme
Governance

Programme
Plan

Performance
Dashboard

Key Risks
& Issues

SS
Engagemen

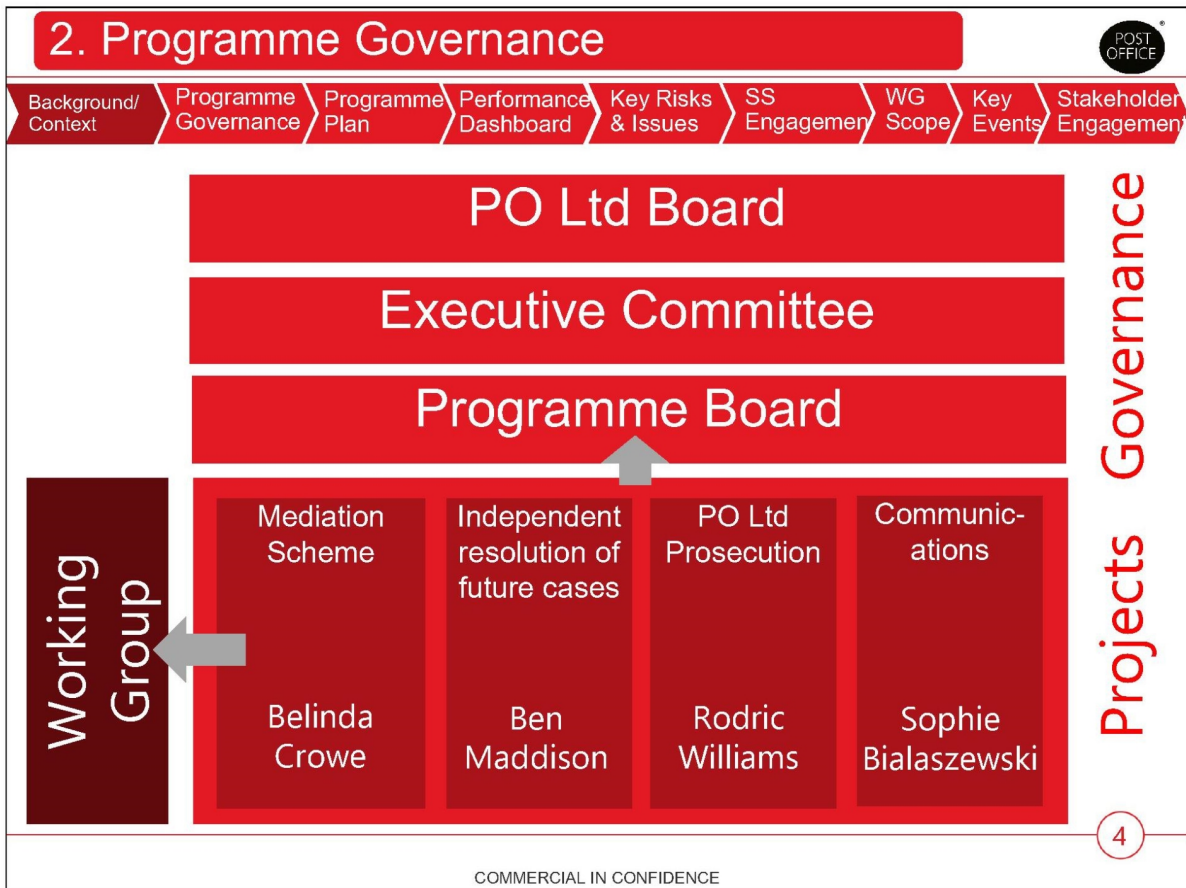
WG
Scope

Key
Events

Stakeholder
Engagemen

3

COMMERCIAL IN CONFIDENCE



2.1 Programme Board ToR

Background/
ContextProgramme
GovernanceProgramme
PlanPerformance
DashboardKey Risks
& IssuesSS
EngagementWG
ScopeKey
EventsStakeholder
Engagement

Frequency	Chair & Secretariat	Core Membership
<ul style="list-style-type: none"> Fortnightly 	<ul style="list-style-type: none"> Chris Aujard, Chair Nicky Mal, Secretariat 	Fay Healey (NED) Belinda Crowe, Angela Van-Den-Bogerd, Charles Colquhoun, Andy Holt, Rodric Williams, Andy Parsons, Sophie Bialaszewski, Jess Barker, Layla Wildon, Nicky Mal, David Oliver
Objectives	Inputs	
<ul style="list-style-type: none"> To provide the overall direction and management of the programme 	<ul style="list-style-type: none"> Programme Board reporting pack Key management information from case tracker Escalated risks or issues for review Draft deliverables for sign-off 	
Responsibilities & Accountabilities	Outputs	
<ul style="list-style-type: none"> Agree key programme artefacts including the programme plan and comms plan Ensure the appropriate coordination across the projects that comprise the programme Reviewing/signing-off deliverables To design the permanent solution for handling future cases Review civil and criminal cases Define acceptable risk profile and risk thresholds for the programme & its projects Resolve issues between projects, which need the input and agreement of senior stakeholders to ensure the progress of the programme Own the resolution of risks and issues that the programme faces Ensure resource availability for programme activities & resolve conflicts Resolve dependencies across programmes Define the success criteria for the programme Review programme budget every month Ensure the programme complies with Post Office data security policies Ensure suggestions for improvement/themes arising out of the programme are fed into the Business Improvement programme and vice versa Oversight of programme communications /PR Manage Second Sight's role in the programme 	<ul style="list-style-type: none"> Agreed programme artefacts Signed-off programme deliverables Agreed mitigating actions for risks /resolution to issues Agreed escalations to ExCo Success criteria for the programme Minutes and actions 	

5

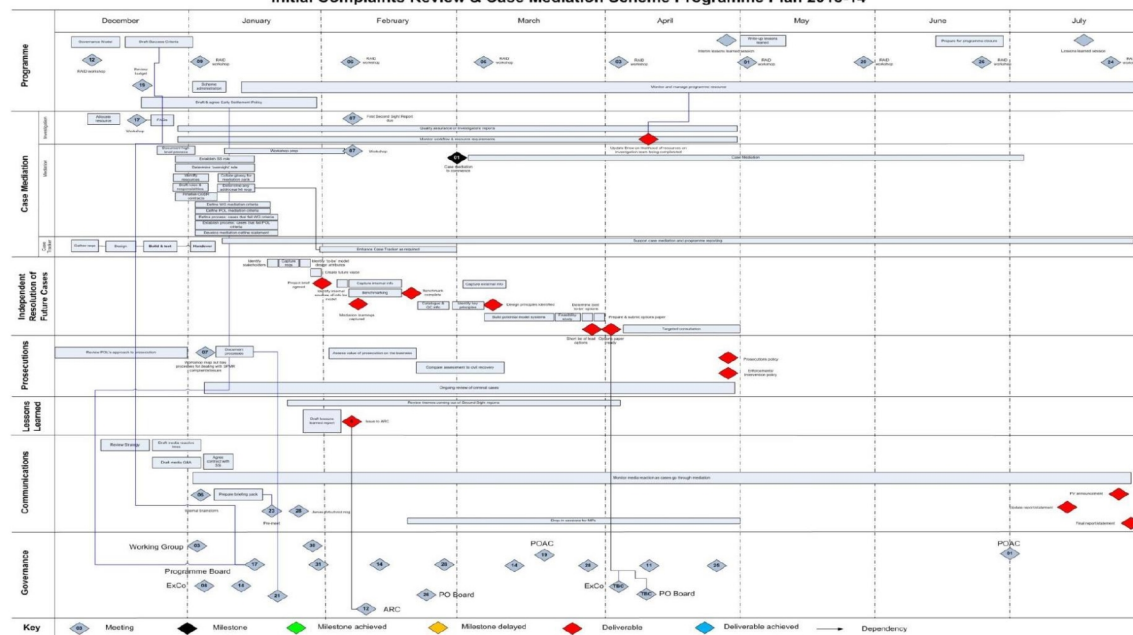
COMMERCIAL IN CONFIDENCE

3. Programme Plan



Background/ Context Programme Governance Programme Plan Performance Dashboard Key Risks & Issues SS Engagement WG Scope Key Events Stakeholder Engagement

Initial Complaints Review & Case Mediation Scheme Programme Plan 2013-14



5. Key Risks & Issues – extracted from programme register



Background/ Context	Programme Governance	Programme Plan	Performance Dashboard	Key Risks & Issues	SS Engagement	WG Scope	Key Events	Stakeholder Engagement
Risk/Issue			Action(s) / Update				Owner	
There is a substantial expectation gap - the difference between the amount claimed by applicants and BD's assessment of the realistic value of the claims. 25 applicants have sought £14M (5 of those are over £1M and a further 7 over £100K). If this is continued for the rest of the applications we would expect to see a gap of ~£47M.			We will be producing a paper on how we will manage the expectation gap for ExCo to consider.				BC	
			Bond Dickinson are keeping the expected liability of cases under regular review and are leading on identifying suitable cases for early settlement.				BD	
			Early engagement with Professional Advisors and MPs are required to manage expectations and minimise reputational damage to POL/negative perceptions of the Scheme. Initial drop-in sessions for MPs are arranged in March.				SB	
Second Sight and JFSA consider the scope of Second Sight work to extend beyond the Scheme and in any event, have taken a very wide view of Second Sight's investigatory role within the Scheme			A letter of engagement has been drafted. Second Sight have declined to sign the current draft and have asked for a number of amendments to be made. Post Office is considering these.				CA	
			A paper will be drafted for ExCo for onward transmission to the Board on the Scheme in general, covering the heightened risk and contractual relationship with Second Sight					

8

COMMERCIAL IN CONFIDENCE

6. Second Sight Engagement



Background/
Context

Programme
Governance

Programme
Plan

Performance
Dashboard

Key Risks
& Issues

SS
Engagement

WG
Scope

Key
Events

Stakeholder
Engagement

7. Scope of the Working Group - BEN

POST OFFICE

Background/
Context

Programme
Governance

Programme
Plan

Performance
Dashboard

Key Risks
& Issues

SS
Engagemen

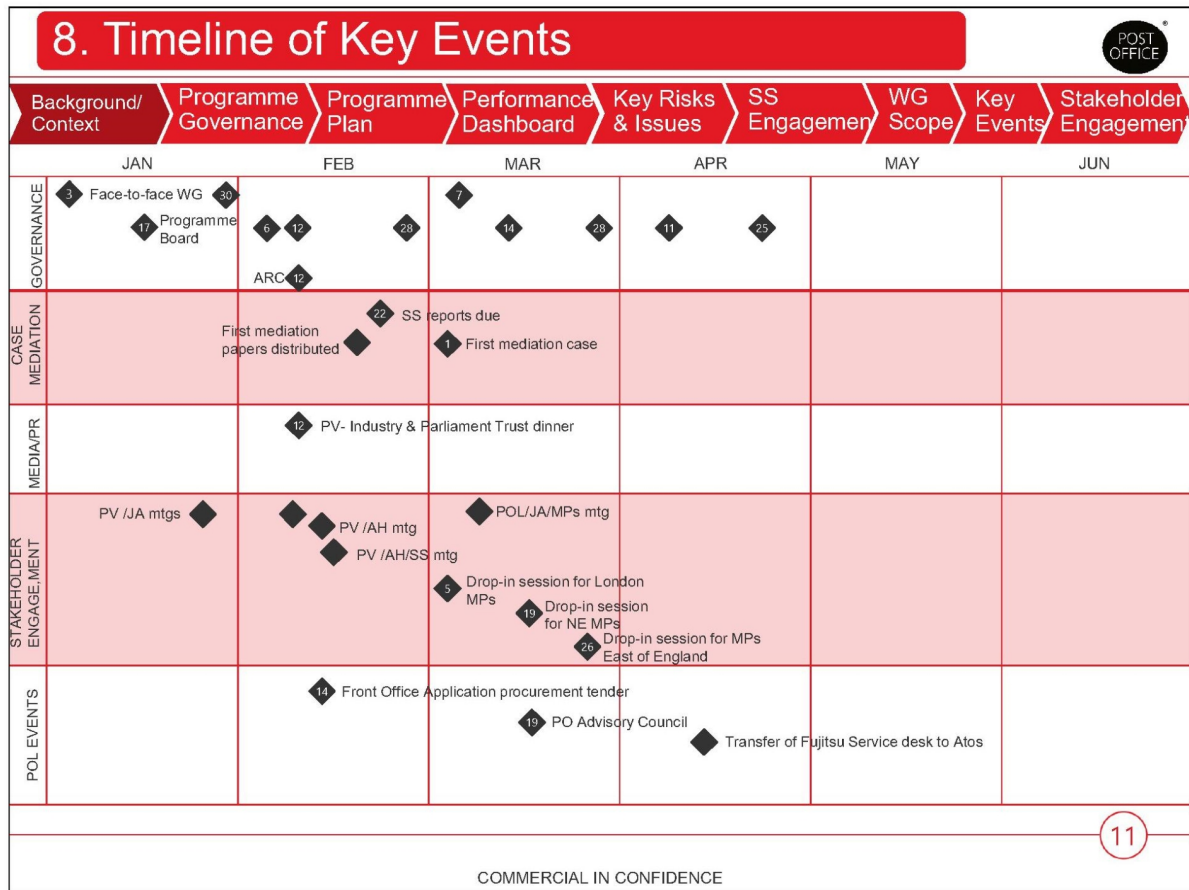
WG
Scope

Key
Events

Stakeholder
Engagemen

10

COMMERCIAL IN CONFIDENCE



9. Stakeholder Engagement - DAVID

POST OFFICE

Background/
Context

Programme
Governance

Programme
Plan

Performance
Dashboard

Key Risks
& Issues

SS
Engagemen

WG
Scope

Key
Events

Stakeholder
Engagemen

12

COMMERCIAL IN CONFIDENCE

AOB



13

COMMERCIAL IN CONFIDENCE