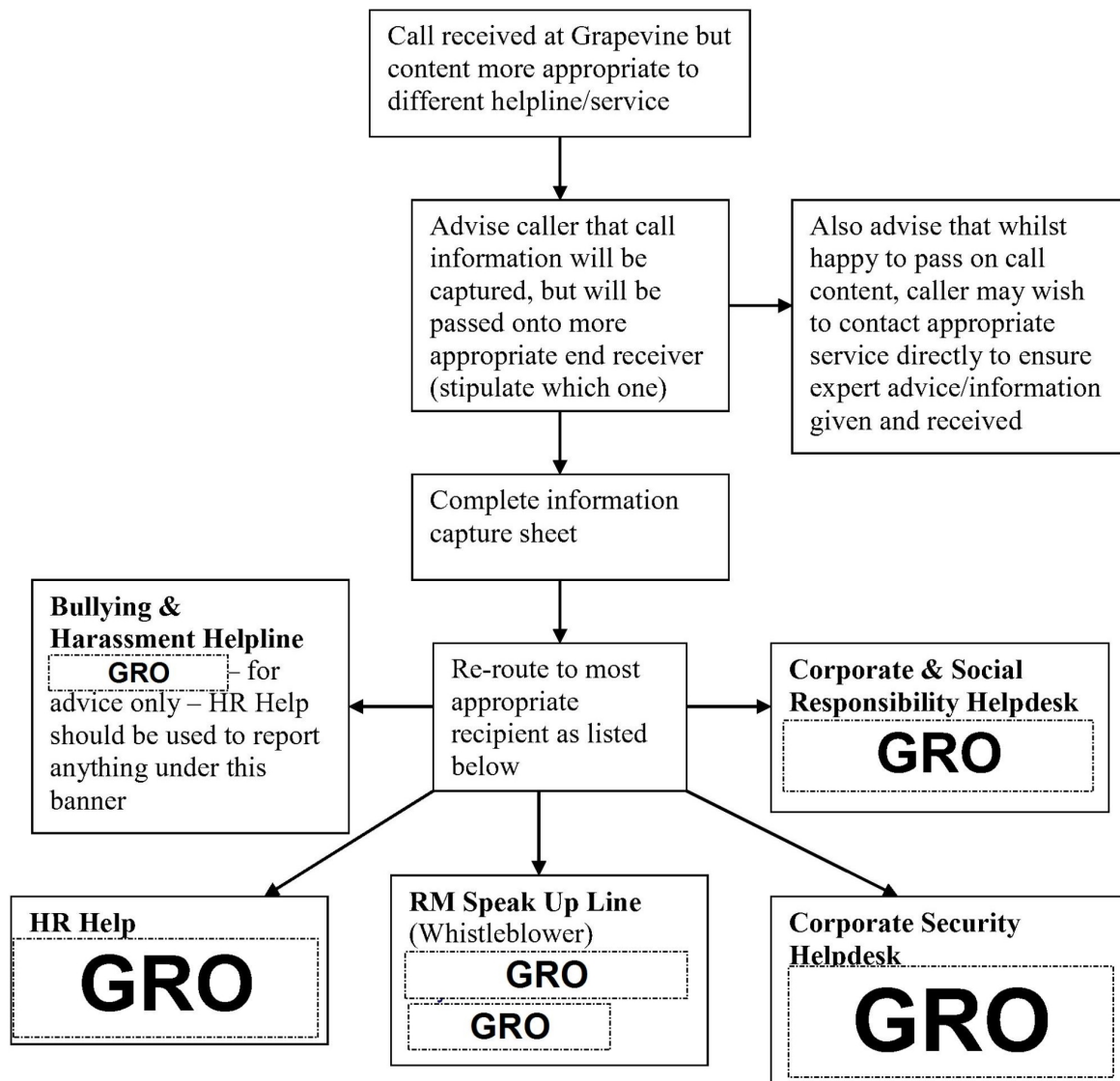


Process for dealing with calls made to Grapevine Internal Fraud line in error



Note:

Bullying & Harassment Helpline can only give advice, incident reporting should be made through the HR service.

HR Help: for reporting issues of a personal nature

Corporate & Social Responsibility Helpdesk: for reporting issues with an environmental impact.

Corporate Security Helpdesk: for reporting any RM security issues

Speak Up Line: for reporting any other RM related calls

Process for dealing with calls made to Grapevine Internal
Fraud line in error