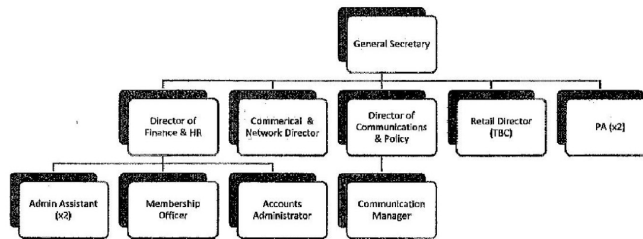


The NFSP headquarters are in Shoreham-by-Sea, West Sussex. The NFSP organisation structure is:



## 9. Organisational Development Plan

The NFSP has experienced a period of decline, the result of two extensive Post Office closure programmes and the current Network Transformation, which has seen many subpostmasters leave the business.

New, often multiple operators are increasing their share of the network, at the expense of single independent operators, while we are also seeing an increase in the number of outreach branches.

As a result of these factors, NFSP membership now stands at around 5,000, from a recent peak of around 20,000 in the early 1980s.